

LEGEND:

- HARBORON CAST IRON MONUMENT
- 1" O.D. ROUND IRON PIPE, FOUND
- 3/4" ROUND IRON ROD, FOUND
- 2 1/2" O.D. ROUND IRON PIPE, FOUND
- 1/4" X 18" ROUND IRON ROD, FOUND
- 1 1/4" X 30" ROUND IRON ROD, PLACED
- WEIGHING 4.17 LBS. PER LIN. FOOT
- 1/4" X 18" ROUND IRON ROD, PLACED
- WEIGHING 1.50 LBS. PER LIN. FOOT
- 5" X 8" X 1/2" W. 1.00" FROM CORNER
- NORMAL PINE
- CORNER LOCATION
- △ MAG. NAIL, FOUND
- △ = RECORDED AS



REVISION: August 2003

There are no objections to this plat with respect to Secs. 28, 15, 23, 16, 23, 20 and 23, 21 (1) and (2), Wis. Stat.

Certified September 4th 2003  
 Paul M. Powell  
 Department of Administration  
 State of Wisconsin

# MAY'S POINT

A PLANNED UNIT DEVELOPMENT AND PART OF GOVERNMENT LOT 6 & PART OF THE SOUTHWEST QUARTER OF THE NORTHWEST QUARTER, PART OF THE NORTHWEST QUARTER AND PART OF THE SOUTHWEST QUARTER OF THE NORTHWEST QUARTER SECTION 1 AND PART OF THE SOUTHWEST QUARTER OF THE NORTHWEST QUARTER SECTION 2, TOWNSHIP 17 NORTH, RANGE 9 EAST, TOWN OF GERMANTOWN, JUNEAU COUNTY, WISCONSIN.

LOT 1  
 JUNEAU COUNTY CERRIFIED  
 SURVEY MAP NO. 29277  
 REC. VOL. 12, C.S.M. PG. 45  
 DOCUMENT NO. 912892  
 OWNED BY OTHERS

Elevation = 881.9' (14 May, 2002)  
 Flood/High Water Elevation = 882.9'  
 Low Water Elevation = 877.0'  
 U.S.C.S. / N.G.V.D. 1929 f

## CASTLE ROCK FLOWAGE

MATCH POINT  
 SEE PAGE 1 OF 4

## OUTLOT 5

MATCH POINT  
 SEE PAGE 3 OF 4

MATCH POINT  
 SEE PAGE 3 OF 4

MATCH POINT  
 SEE PAGE 3 OF 4

MATCH POINT  
 SEE PAGE 3 OF 4

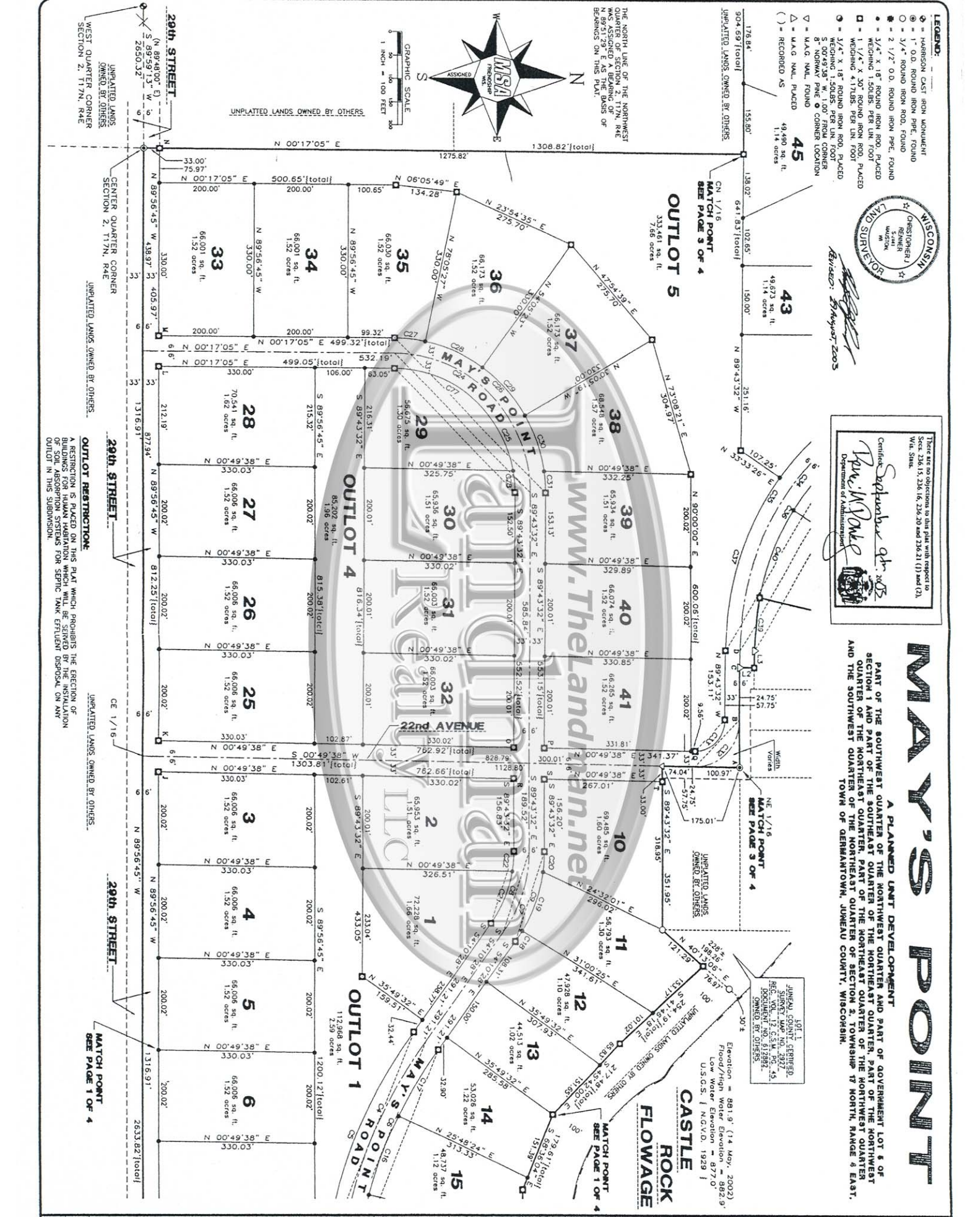
MATCH POINT  
 SEE PAGE 3 OF 4

MATCH POINT  
 SEE PAGE 3 OF 4

MATCH POINT  
 SEE PAGE 3 OF 4

MATCH POINT  
 SEE PAGE 3 OF 4

MATCH POINT  
 SEE PAGE 3 OF 4



# MAY'S POINT

**A PLANNED UNIT DEVELOPMENT PART OF THE SOUTHWEST QUARTER AND PART OF GOVERNMENT LOT 6 OF SECTION 1 AND PART OF THE SOUTHWEST QUARTER OF THE NORTHEAST QUARTER, PART OF THE NORTHWEST QUARTER AND PART OF THE SOUTHWEST QUARTER OF THE NORTHEAST QUARTER OF SECTION 2, TOWNSHIP 17 NORTH, RANGE 6 EAST, TOWN OF GERMANTOWN, JUNEAU COUNTY, WISCONSIN.**



174.195

NORTHWEST CORNER  
SECTION 2, T17N, R4E  
2649.67 (total)  
S 89°51'29" W  
174.195

PART OF SURVEY  
CONCESSIONS  
DATED 10/21/1990  
OWNED BY OTHERS

TOWN OF NECEDAH  
30' easement  
N 89°51'29" E 904.72'

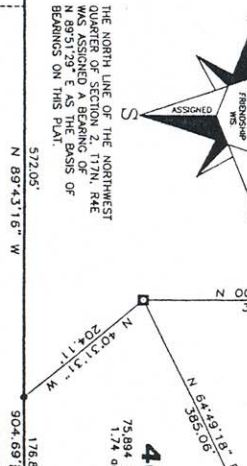
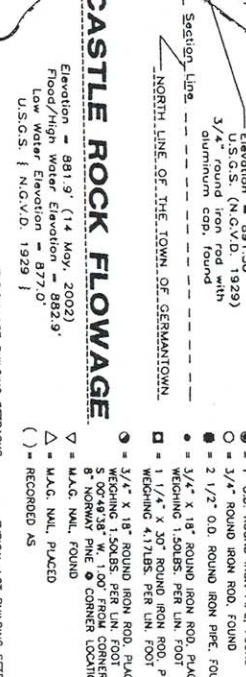
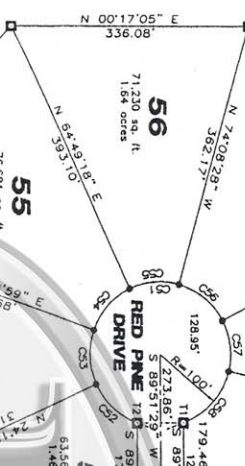
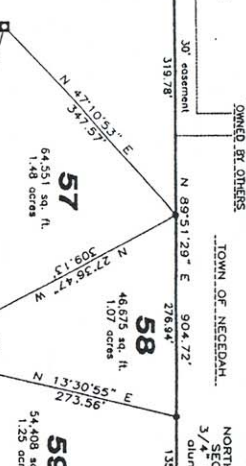
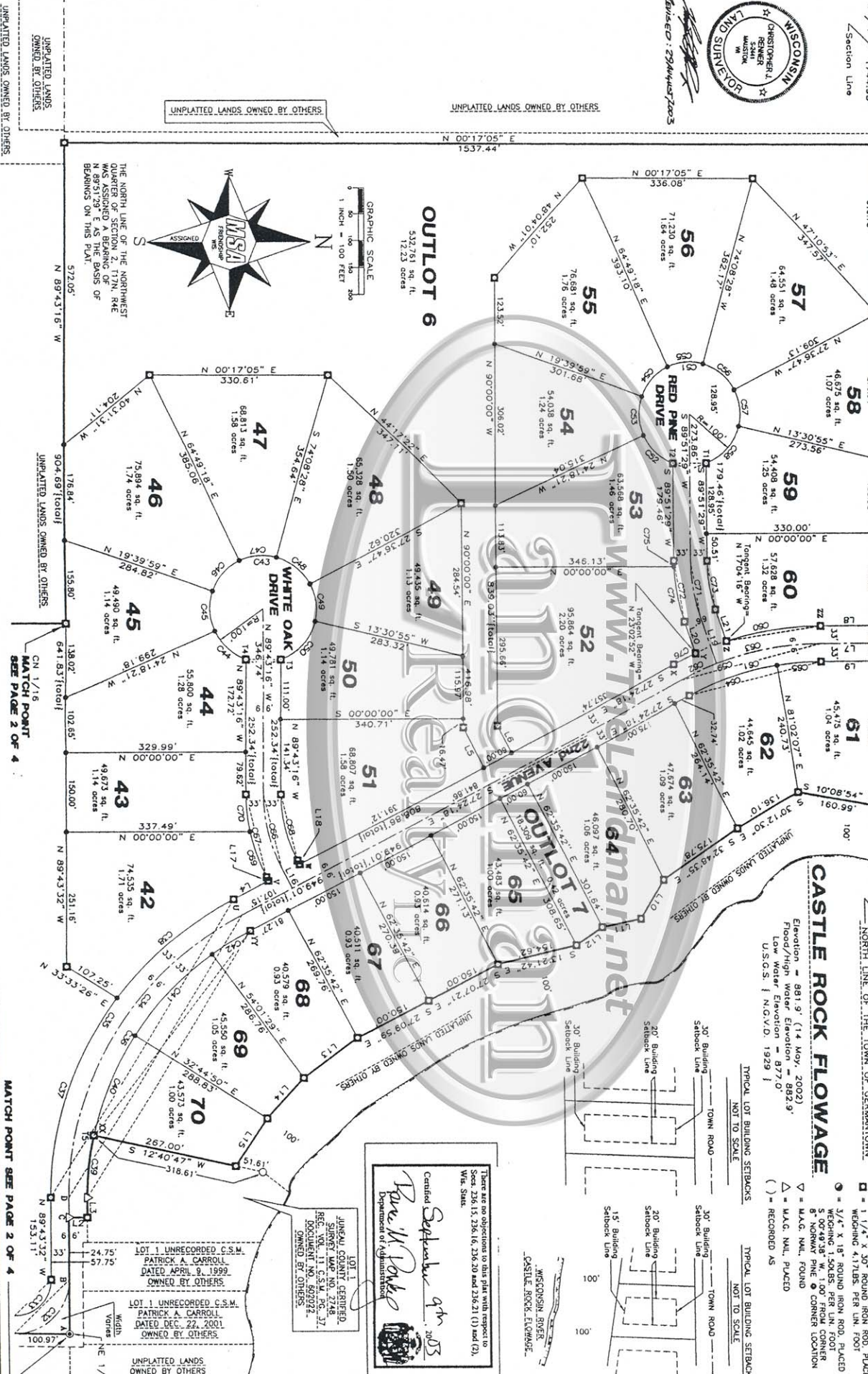
LAKEVIEW STREET  
NORTH QUARTER CORNER  
SECTION 2, T17N, R4E  
aluminum cap, found

UNPLATTED LANDS OWNED BY OTHERS  
TOWN OF NECEDAH  
SECTION 2, T17N, R4E  
aluminum cap, found

UNPLATTED LANDS OWNED BY OTHERS  
TOWN OF NECEDAH  
SECTION 2, T17N, R4E  
aluminum cap, found

MEASUREMENT  
NORTHWEST QUARTER  
SECTION 2, T17N, R4E  
Elevation = 891.50  
U.S.G.S. (N.C.V.D. 1929)

UNPLATTED LANDS OWNED BY OTHERS  
TOWN OF NECEDAH  
SECTION 2, T17N, R4E  
aluminum cap, found



GRAPHIC SCALE  
1 INCH = 100 FEET

UNPLATTED LANDS OWNED BY OTHERS

UNPLATTED LANDS OWNED BY OTHERS

UNPLATTED LANDS OWNED BY OTHERS

UNPLATTED LANDS OWNED BY OTHERS

UNPLATTED LANDS OWNED BY OTHERS

UNPLATTED LANDS OWNED BY OTHERS

UNPLATTED LANDS OWNED BY OTHERS

UNPLATTED LANDS OWNED BY OTHERS

UNPLATTED LANDS OWNED BY OTHERS

UNPLATTED LANDS OWNED BY OTHERS

UNPLATTED LANDS OWNED BY OTHERS

UNPLATTED LANDS OWNED BY OTHERS

UNPLATTED LANDS OWNED BY OTHERS

UNPLATTED LANDS OWNED BY OTHERS

UNPLATTED LANDS OWNED BY OTHERS

UNPLATTED LANDS OWNED BY OTHERS

UNPLATTED LANDS OWNED BY OTHERS

UNPLATTED LANDS OWNED BY OTHERS

UNPLATTED LANDS OWNED BY OTHERS

UNPLATTED LANDS OWNED BY OTHERS

UNPLATTED LANDS OWNED BY OTHERS

UNPLATTED LANDS OWNED BY OTHERS

UNPLATTED LANDS OWNED BY OTHERS

UNPLATTED LANDS OWNED BY OTHERS

UNPLATTED LANDS OWNED BY OTHERS

UNPLATTED LANDS OWNED BY OTHERS

UNPLATTED LANDS OWNED BY OTHERS

UNPLATTED LANDS OWNED BY OTHERS

UNPLATTED LANDS OWNED BY OTHERS

UNPLATTED LANDS OWNED BY OTHERS

UNPLATTED LANDS OWNED BY OTHERS

UNPLATTED LANDS OWNED BY OTHERS

UNPLATTED LANDS OWNED BY OTHERS

UNPLATTED LANDS OWNED BY OTHERS

UNPLATTED LANDS OWNED BY OTHERS

UNPLATTED LANDS OWNED BY OTHERS

UNPLATTED LANDS OWNED BY OTHERS

UNPLATTED LANDS OWNED BY OTHERS

UNPLATTED LANDS OWNED BY OTHERS

UNPLATTED LANDS OWNED BY OTHERS

UNPLATTED LANDS OWNED BY OTHERS

UNPLATTED LANDS OWNED BY OTHERS

UNPLATTED LANDS OWNED BY OTHERS

UNPLATTED LANDS OWNED BY OTHERS

UNPLATTED LANDS OWNED BY OTHERS

UNPLATTED LANDS OWNED BY OTHERS

UNPLATTED LANDS OWNED BY OTHERS

UNPLATTED LANDS OWNED BY OTHERS

UNPLATTED LANDS OWNED BY OTHERS

UNPLATTED LANDS OWNED BY OTHERS

UNPLATTED LANDS OWNED BY OTHERS

UNPLATTED LANDS OWNED BY OTHERS

UNPLATTED LANDS OWNED BY OTHERS

UNPLATTED LANDS OWNED BY OTHERS

UNPLATTED LANDS OWNED BY OTHERS

UNPLATTED LANDS OWNED BY OTHERS

UNPLATTED LANDS OWNED BY OTHERS

UNPLATTED LANDS OWNED BY OTHERS

UNPLATTED LANDS OWNED BY OTHERS

UNPLATTED LANDS OWNED BY OTHERS

UNPLATTED LANDS OWNED BY OTHERS

UNPLATTED LANDS OWNED BY OTHERS

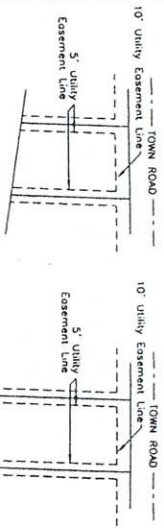
Certified September 9th 2005  
Boyd H. Parks  
Department of Administration

UNPLATTED LANDS OWNED BY OTHERS

UNPLATTED LANDS OWNED BY OTHERS

UNPLATTED LANDS OWNED BY OTHERS



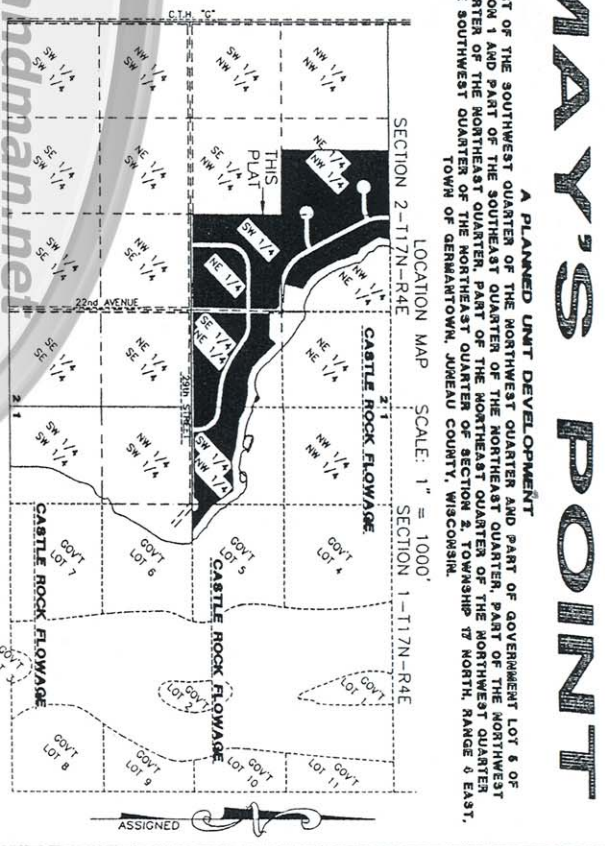
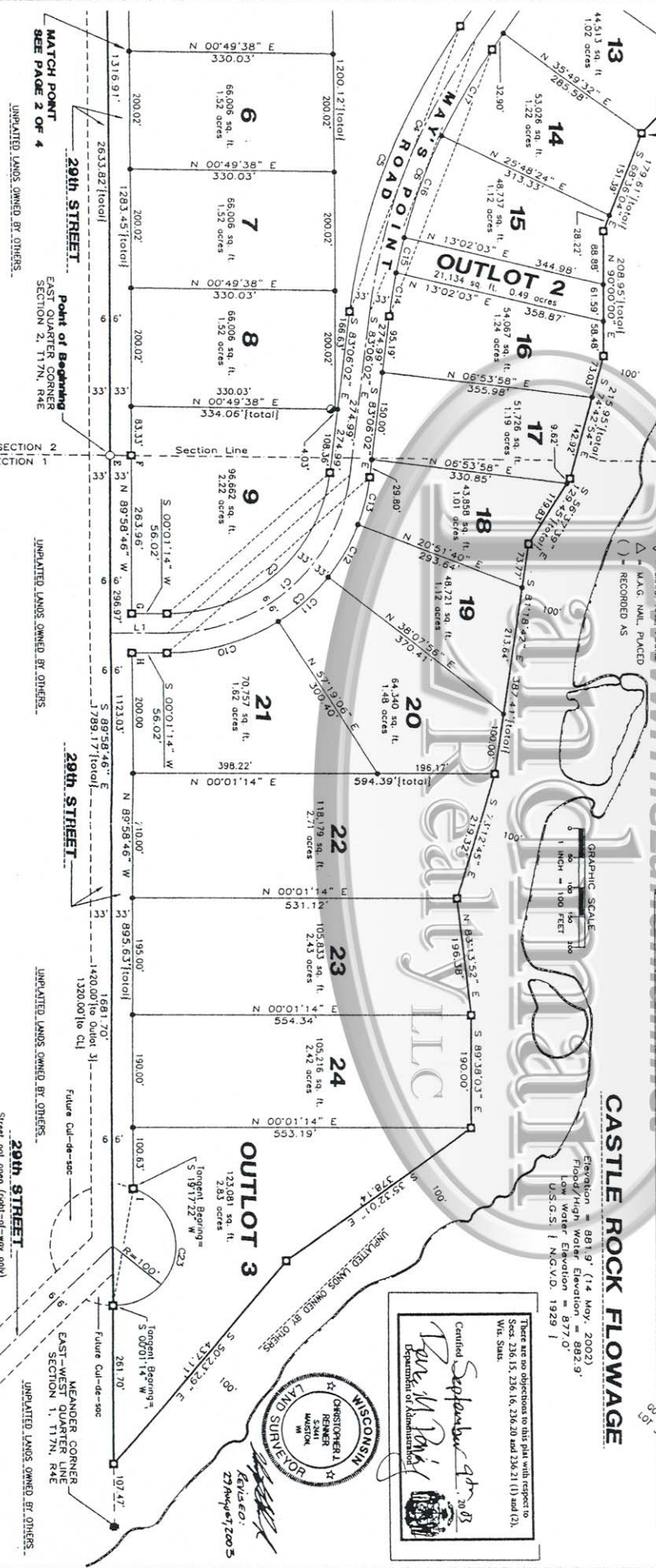


### CASTLE ROCK FLOWAGE

Elevation = 881.9' (14 May, 2002)  
Flood/High Water Elevation = 882.9'  
Low Water Elevation = 877.0'  
U.S.G.S. 1 N1010, 1929 1



- LEGEND:**
- ⊕ HARRISON CAST IRON MONUMENT
  - 1" O.D. ROUND IRON PIPE, FOUND
  - 3/4" ROUND IRON ROD, FOUND
  - 2 1/2" O.D. ROUND IRON PIPE, FOUND
  - 3/4" X 18" ROUND IRON ROD, PLACED
  - 1 1/4" X 30" ROUND IRON ROD, PLACED
  - WEIGHING 4.17LBS. PER LN. FOOT
  - 3/4" X 18" ROUND IRON ROD, PLACED
  - WEIGHING 1.50LBS. PER LN. FOOT
  - 1 1/4" X 30" ROUND IRON ROD, PLACED
  - WEIGHING 4.17LBS. PER LN. FOOT
  - U.A.C. NAIL FOUND
  - U.A.C. NAIL PLACED
  - RECORDED AS



# MAY'S POINT

A PLANNED UNIT DEVELOPMENT AND PART OF GOVERNMENT LOT 6 OF SECTION 1 AND PART OF THE SOUTHWEST QUARTER PART OF THE NORTHWEST QUARTER OF THE NORTHWEST QUARTER OF SECTION 2, TOWNSHIP 17 NORTH, RANGE 4 EAST, TOWN OF GERRAHTOWN, JUNEAU COUNTY, WISCONSIN.

**CERTIFICATE OF TAXES PAID:**  
**TREASURER'S CERTIFICATE:**  
WE, BEING DULY ELECTED, QUORUMED AND ACTING TREASURERS OF JUNEAU COUNTY, WISCONSIN, DO HEREBY CERTIFY THAT THE RECORDS IN OUR OFFICES SHOW NO UNRECORDED TAX SALES, UNPAID TAXES OR UNPAID SPECIAL ASSESSMENTS AFFECTING ANY OF THE LOTS INCLUDED IN THIS PLAT AS OF THE DATES LISTED BELOW.

**JUNEAU COUNTY REGISTER OF DEEDS:**  
Register's Office }  
Received for record this \_\_\_\_\_ DAY OF \_\_\_\_\_ 2003  
at \_\_\_\_\_ M. AND RECORDED IN VOLUME \_\_\_\_\_ OF PLATS, PAGE \_\_\_\_\_

There are no objections to this plat with respect to W.S. Stats.  
Certified September 4th 2003  
Tara M. Boyd  
Department of Administration



www.TheLandman.net