

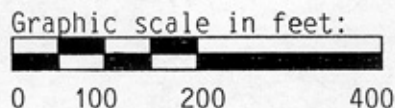
JUNEAU COUNTY CERTIFIED SURVEY MAP No. 2016

Located in
SE¼-NE¼, Section 13, T15N, R4E,
Town of Lemonweir, Juneau County, Wisconsin.

Carlson Surveying and Engineering, Inc., 1709 Ash St., Baraboo, WI, 53913.
Tel-Fax: (608)356-8598.

Client: American Investment Co., P.O.Box 250, Coloma, WI, 54930.

Bearings are based on the south line of the NE¼ of Section 13, which is assumed to bear N89°36'35"W.



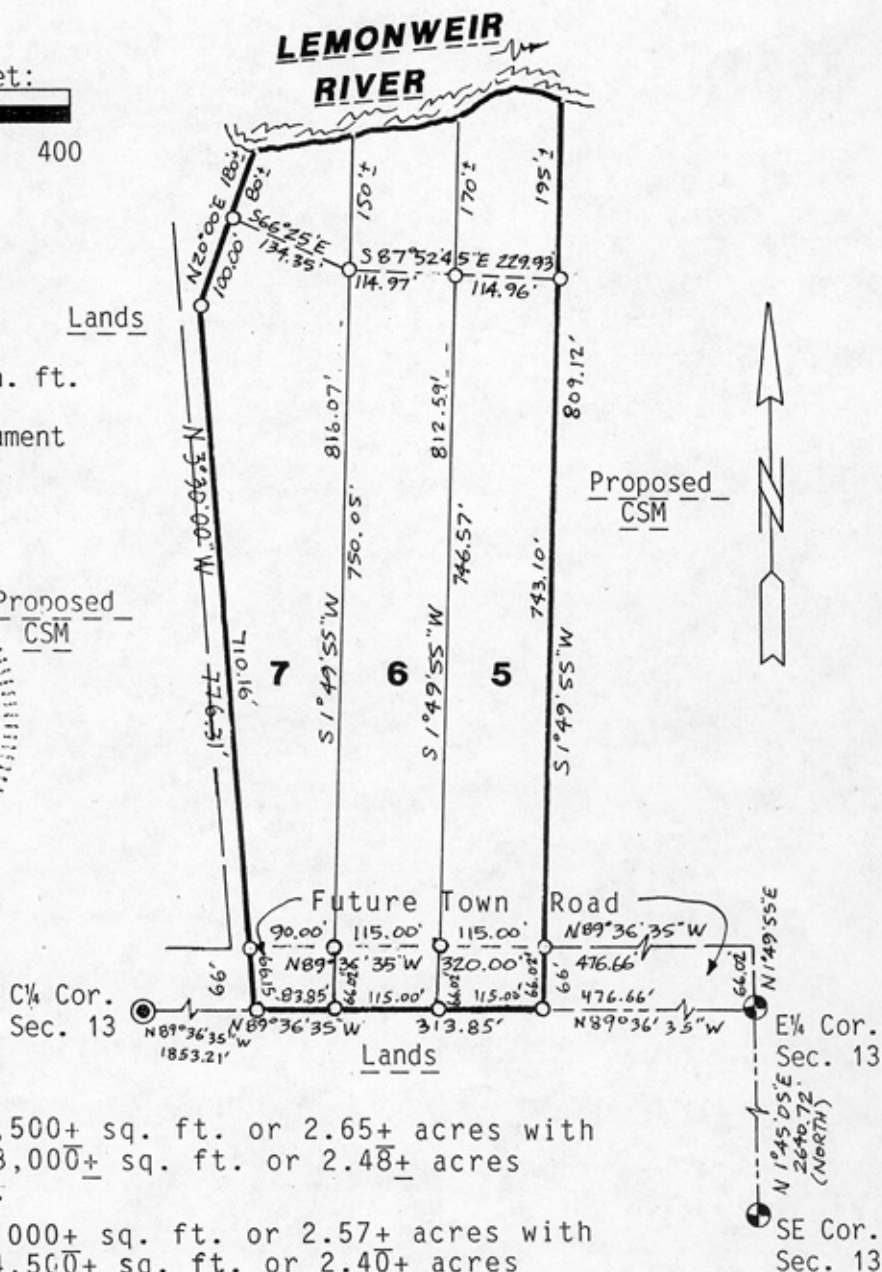
Legend:

- = Set 3/4"x24" round iron rod weighing 1.5#/lin. ft.
- = Found 1" pipe.
- ⊕ = Found gov't. monument (Harrison).
- () = Recorded as...

Lands

Proposed CSM

Mark C. Carlson
5-13-76



Lands

Lot 5 contains 115,500+ sq. ft. or 2.65+ acres with future road and 108,000+ sq. ft. or 2.48+ acres without future road.

Lot 6 contains 112,000+ sq. ft. or 2.57+ acres with future road and 104,500+ sq. ft. or 2.40+ acres without future road.

Lot 7 contains 115,500+ sq. ft. or 2.66+ acres with future road and 110,000+ sq. ft. or 2.52+ acres without future road.