

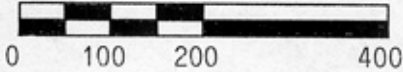
Located in
SE¼-NE¼, Section 13, T15N, R4E,
Town of Lemonweir, Juneau County, Wisconsin.

Carlson Surveying and Engineering, Inc., 1709 Ash St., Baraboo, WI, 53913.
Tel-Fax: (608)356-8598.

Client: American Investment Co., P.O.Box 250, Coloma, WI, 54930.

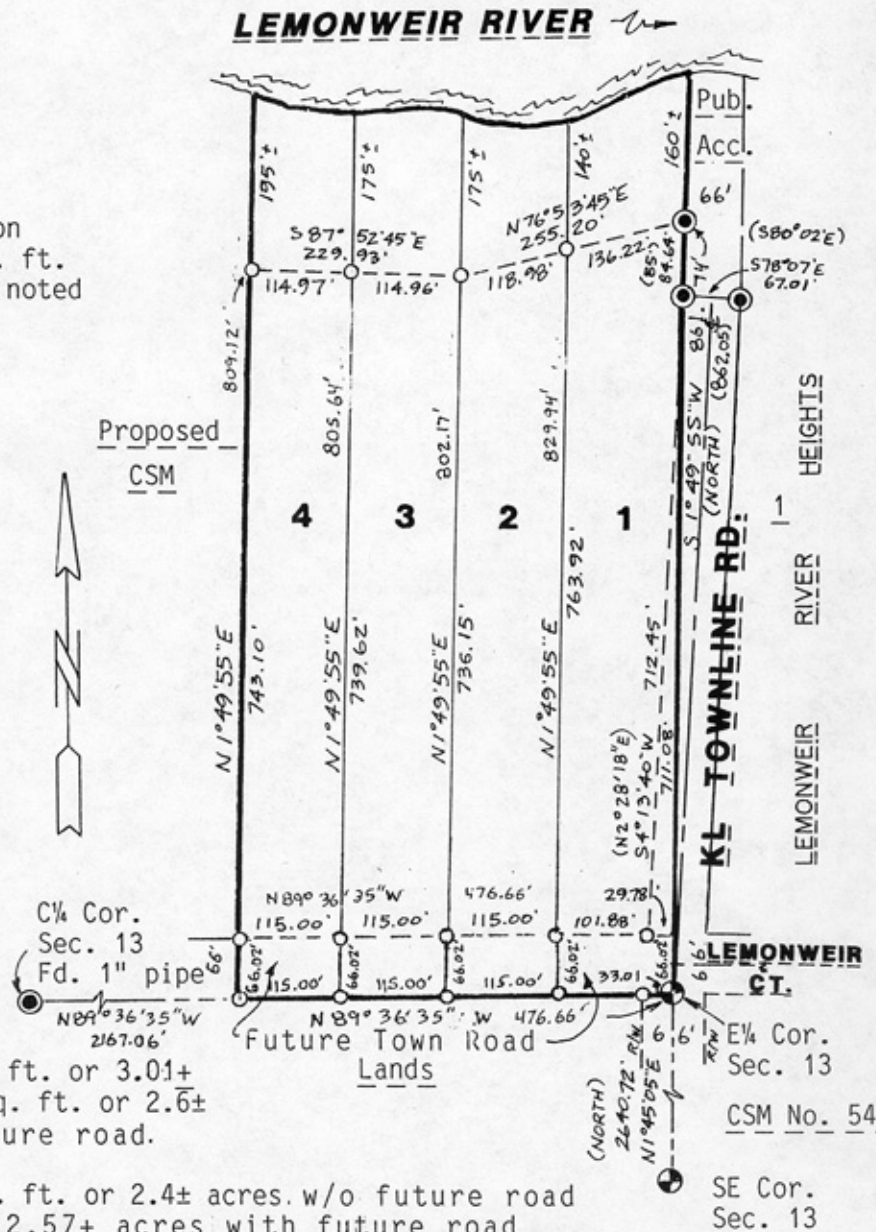
Bearings are based on the south line of the NE¼ of Section 13, which is assumed to bear N89°36'35"W.

Graphic scale in feet:



Legend:

- = Set 3/4"x24" round iron rod weighing 1.5#/lin. ft.
- = Found 2" pipe (unless noted otherwise).
- ⊙ = Found gov't. monument (Harrison).
- () = Recorded as...



Lot 1 contains 131,000±sq. ft. or 3.01+ acres with R/W; 112,000± sq. ft. or 2.6± acres without R/W and future road.

Lot 2 contains 104,500± sq. ft. or 2.4± acres.w/o future road or 112,000+ sq. ft. or 2.57+ acres with future road
 Lot 3 contains 105,000± sq. ft. or 2.4± acres.w/o future road or 112,500 + sq. ft. or 2.58+ acres with future road
 Lot 4 contains 106,500± sq. ft. or 2.4± acres.w/o future road or 114,000± sq. ft. or 2.62+ acres with future road

CSM No. 54

SE Cor. Sec. 13

200