

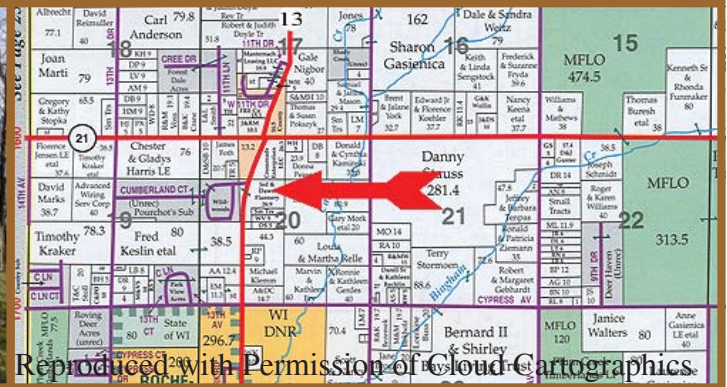
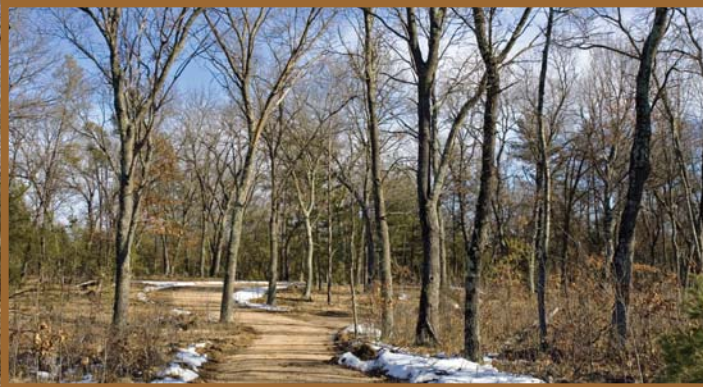
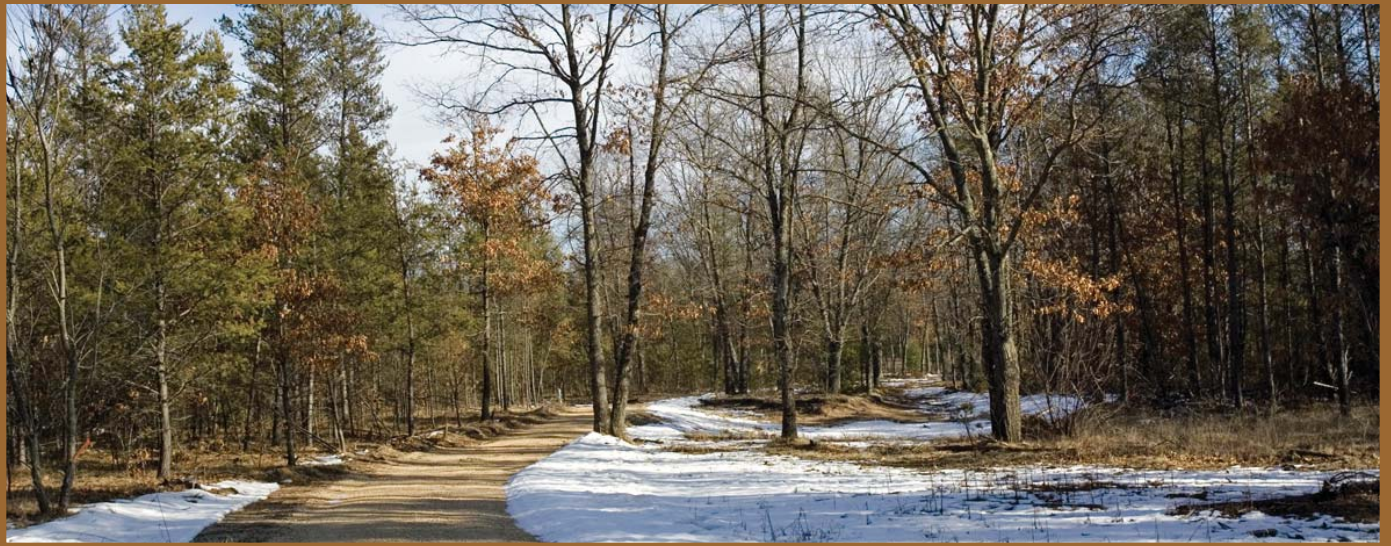


888-696-8695

By State Highways 21 & 13

Asking

\$46,000.



Reproduced with Permission of Cloud Cartographics.

9 Wooded Ac just South of Hwy 21

Description Acreage by Hwy 21 & 13
Property Size 9 +/- Acres
Taxes 2004 \$TBD.
Electric By Property
Phone By Property
Property Features: Road Frontage on State Highway by one of Adams Counties busiest intersections; State Highways 13 & 21.
MORE ACREAGE AVAILABLE - CALL

Build your vacation home or log cabin off the beaten path. 9+ acres of mature hardwoods with a mix of pines surrounds the private home site. The seller has put in a gravel driveway and the power is at the road. This gorgeous parcel is located just North of the county seat (Friendship) along Hwy 13. It's just minutes to many of the areas excellent fishing and boating lakes. From Adams - Friendship: Hwy 13 North to property on right (just South of Hwy 21).

www.TheLandman.net