

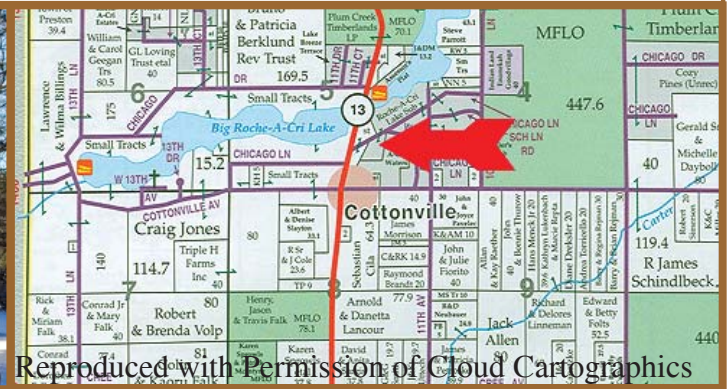


888-696-8695

By Big Roche-A-Cri Lake

Asking

\$144,900.



Reproduced with Permission of Cloud Cartographics

Deeded Access to Big Roche-A-Cri Lake

Size of Home	1687 sq ft
Bedrooms	2
Bathrooms	2
Basement	Full
Garage	2 Stall
Property Size	.9 +/- Acres
Taxes 2005	\$1583.
Features: 3-Season Porch, Ceiling Fans, Eat-In Kitchen, Fireplace, Workshop and More.	

Come relax with deeded access to Big Roche A Cri Lake on two back to back lots. The home has two bedrooms and a full basement, inclusive of a three season porch with Southern exposure. Spend your days fishing, swimming or boating on the lake and your evenings in front of the fire-place. Just 25 minutes from Wisconsin Rapids and about 45 minutes to the Wisconsin Dells. From Friendship, take Hwy 13 N. Take Chicago Ln East (to the right) which is approximately 2.25 miles North of Hwy 21. The home is the second home on right after leaving Hwy 13.

www.TheLandman.net