

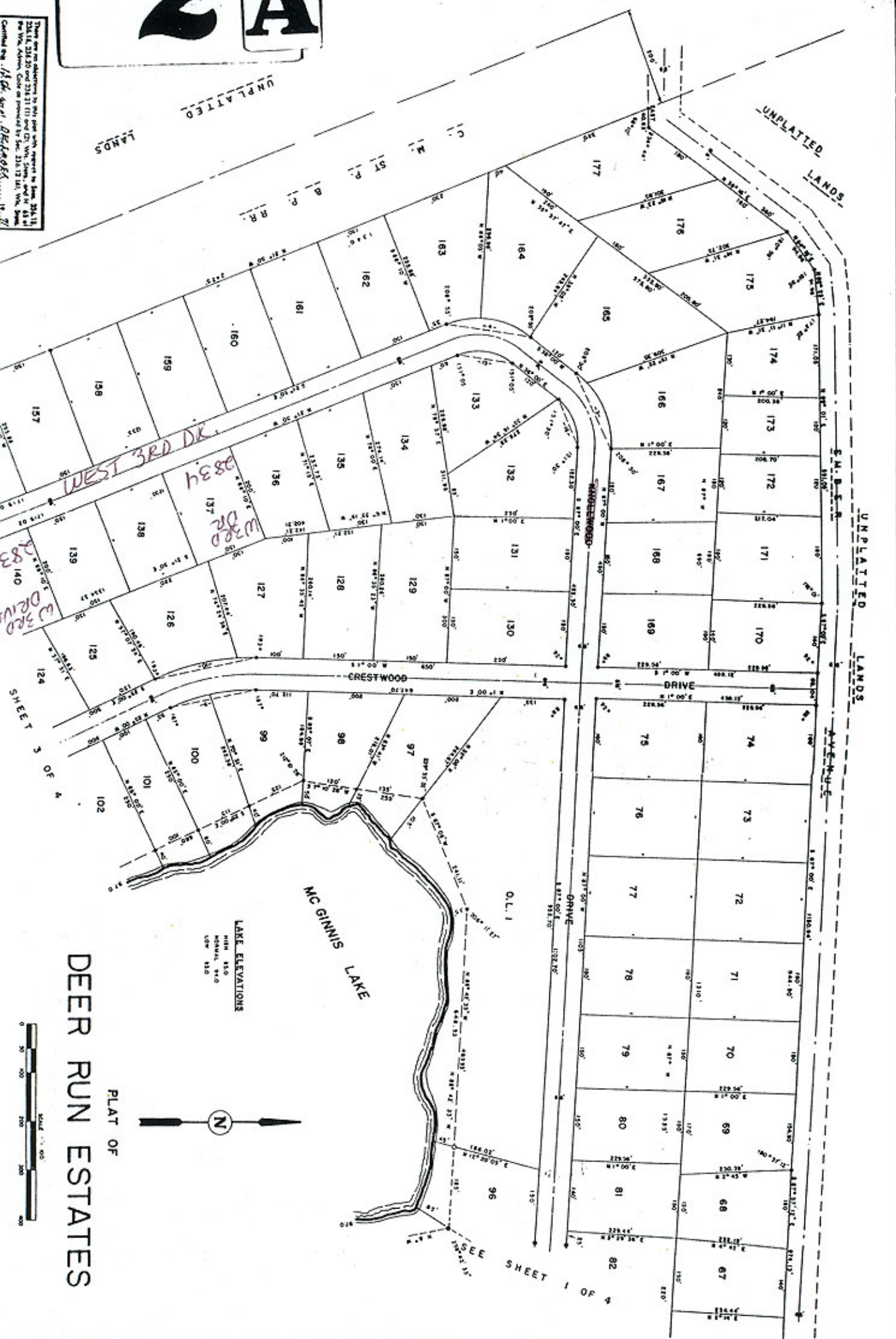
# 2A

There are no objections to this plan with respect to the 204.13, 204.14, 204.20 and 204.21 (1) and (2) W.M. Survey, and it is hereby approved for recording by the County Clerk of the County of DeKalb, Georgia.

UNPLATED LANDS

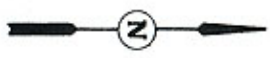
UNPLATED LANDS

UNPLATED LANDS



## DEER RUN ESTATES

PLAT OF



LAKE ELEVATIONS  
 HIGH 15.0  
 NORMAL 9.6  
 LOW 3.0



SHEET 3 OF 4

SEE SHEET 1 OF 4