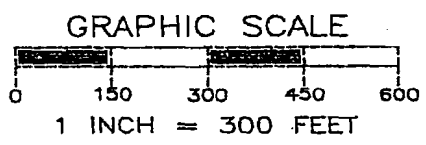


# PAGE 2 OF ADAMS COUNTY CSM MAP NO. 3872



## LEGEND

- ⊕ - HARRISON MONUMENT, FD.
- ⊙ - 3/4" IRON ROD, FOUND
- - 3/4" X 24" IRON ROD, 1.5 #/FT., PLACED
- - 2" IRON PIPE, FOUND
- ▲ - 1" IRON PIPE, FOUND

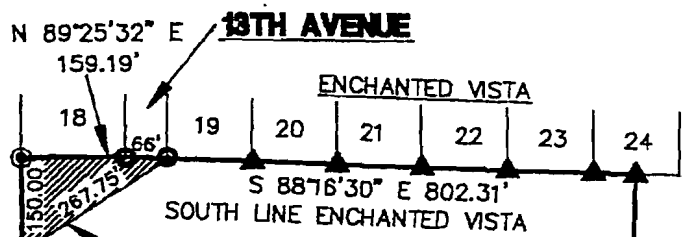


*Gregory P. Rhinehart*  
1999

WISCONSIN

**GREGORY P. RHINEHART**  
S-1478  
FRIENDSHIP,  
WISCONSIN

IF THE SURVEYOR'S SEAL IS NOT REPRODUCED IN COLOR, THIS MAP IS A COPY AND SHOULD BE ASSUMED TO CONTAIN UNAUTHORIZED ALTERATIONS. THE CERTIFICATION DOES NOT APPLY TO COPIES.



EASEMENT FOR INGRESS-EGRESS TO BENEFIT OWNERS OF SE/NE, S31,T18N,R6E (CROSS-HATCHED AREA)

N 00°29'23" W 1113.91'

WEST LINE SW/NW

AREA IN SW/NW  
23.63 ACRES

S 01°39'28" W 1068.68'

CSM 1275

CSM 3457

POB WEST QUARTER CORNER S32,T18N,R6E

NE CORNER NW/SW

CSM 430

CSM 430

CSM 126

LOT 1  
2288378 SQ FT  
52.53 ACRES

AREA IN NW/SW  
28.90 ACRES

WEST LINE NW/SW  
N 03°45'33" E 1324.49'

S 01°40'14" W 1032.43'

CSM 2037

CSM 2037

S 89°05'44" E 278.22'

S 01°40'14" W 209.50'

278.87'

N 89°04'08" W

JUNGENBERG MR1061/25

BARTLEY 146/283

S 01°06'50" W 66.70'

STH-19

SW CORNER NW/SW  
S 87°49'38" W 970.09'

SE CORNER NW/SW

CSM 2595

SURVEYOR'S CERTIFICATE ON PAGE 1 OF THIS DOCUMENT