

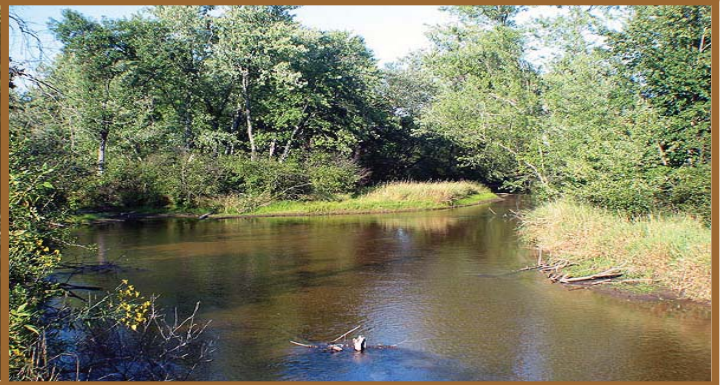


888-696-8695

Wildlife Conservancy Access

Asking

\$34,900.



Part Ownership in 157 Acre Conservancy

Description	Lot with Access to 157 Acres
Property Size	1 +/--Acres
Taxes 2006	\$467.
Electric	By Property
Phone	By Property

Property Features: Wooded, Deeded Access to Conservancy, Public Land Across the Road

Area Amenities: Castle Rock Lake, Petenwell Lake, Golf, ATVing, Horseback Riding & More

The options are endless in Crystal Brook Woods! Whether it be enjoying 9000' feet of creek frontage, or relaxing in the 157 acre conservancy, you will always have much to do. There are special areas for picnicking, social gatherings, and observing nature and wildlife. This lot is close to Castle Rock Lake and Lake Petenwell, Wisconsin's 2nd and 4th largest lakes. Both are known for the fishing and ample water sporting activities available. This lovely wooded building site is directly on the path to the conservancy and on the road to fun!!! Take a jump into nature and relaxation.

www.TheLandman.net