

Easton Shores Lake Access!

www.TheLandman.net - 888-696-8695



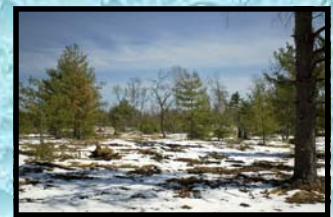
\$37,900.

206 Main Street
Friendship, Wi 53934

Phone: 888-696-8695
Email: landman@thelandman.net

Lot 1 Edgewood Dr. | Adams | Wisconsin | 53910

- 5.07+/- Acres
- Corner Lot
- Risk Creek Nearby
- Near Wisconsin Dells
- Near Castle Rock Lake
- Buildable Land
- Easton Township
- MLS #: 1555819



Easton Shores is offering this parcel on the corner of Tenth Drive and Edgewood Drive. You will be able to enjoy just over 5 acres with plenty of road frontage. It's a short walk to the fishing hole on Risk Creek. Take Advantage of the rest area just down stream from the Dam while the kids are playing in the pond. This gorgeous parcel is 20 minutes from the Dells and only about 15 minutes from the beach on Castle Rock Lake. Call office for more details! 888-696-8695 www.thelandman.net

Contact Landman Realty LLC Today For A Personal Showing. 888-696-8695 Open 7 Days A Week!