

# Mature Hardwoods & Pines!

[www.TheLandman.net](http://www.TheLandman.net)



888-696-8695

**Landman Realty LLC**

206 Main Street  
Friendship, WI 53934

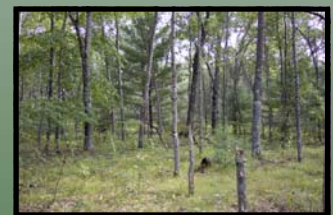
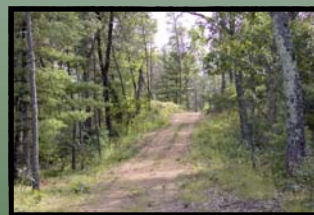
Phone: 888-696-8695  
Email: [landman@thelandman.net](mailto:landman@thelandman.net)



**\$39,900.**

Lot 6 Bighorn Ave. | Arkdale | Wisconsin | 54613

- Mature Hardwoods
- Nearby Lakes
- By Petenwell County Park
- Public Boat Docks Nearby
- 5.03+/- Acres
- Camp Or Build
- Monroe Township
- MLS #: 1534867



Camp or build on this parcel that has mature hardwoods and pines. This acreage is located in the heart of all the action that **Central Wisconsin** has to offer! It is just minutes from all the water sports that you love! From sailing regattas to jet skis, this lake has them all. Plenty of fish both big and small, will delight all the anglers in your group! **Petenwell County** and Monroe Township parks are close by and have **public docks**, campgrounds, boat launches, sandy beaches and more! *Call today for more information on this property and setup a personal showing! 888-696-8695*

Contact Landman Realty LLC Today For A Personal Showing. 888-696-8695 Open 7 Days A Week!