

Fully Wooded Cheap Land!

Www.TheLandman.net



888-696-8695

Landman Realty LLC

206 Main Street
Friendship, WI 53934

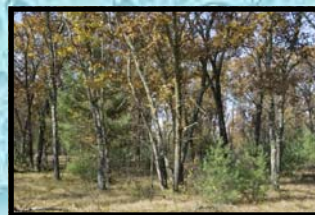
Phone: 888-696-8695
Email: landman@thelandman.net



\$37,900.

Lot 3110th Ave. | Adams | Wisconsin | 53910

- Additional Land Available
- Access To Small Lake
- Near Wisconsin River
- Short Drive To State Park
- 5.22+/- Acres
- Fully Wooded
- Easton Township
- MLS#: 1474023



Wisconsin wooded land for sale in Adams County, just east of Castle Rock Lake. This fully wooded parcel of land is loaded with mature hardwoods and a mix of pines. The property is narrow at the road and over 600 feet wide in back and it's located at the end of a cul-de-sac making it very secluded & private. Electric and phone are at the road. Adams County offers endless possibilities for the outdoor enthusiast. It also has flea markets, craft stores, antique shops for decorating your future log cabin. And being in Central Wisconsin the Dells is nearby with easy access to I-90 & I-39. The property is located about 3 1/2 hours from **Chicago, IL.**, 2 1/2 hours from **Milwaukee, WI.**, one hour 15 minutes from **Madison, WI.**, and about three hours from the **Twin Cities** in Minnesota. *Call today for information on this property and a personal showing! 888-696-8695*

Contact Landman Realty LLC Today For A Personal Showing. 888-696-8695 Open 7 Days A Week!