



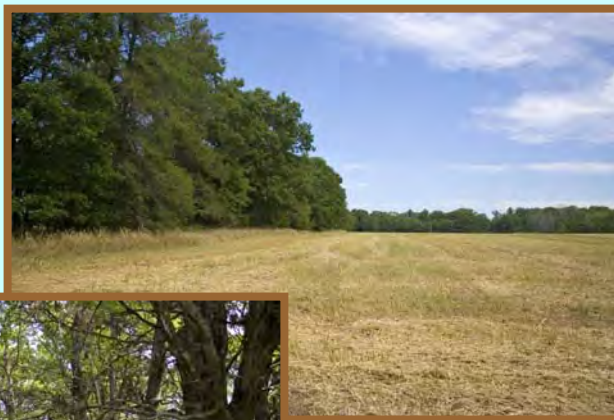
GRAND OPENING !

Easton Shores

Sat. Aug 18th 2007 – 11 am to 3 pm.

If you are looking for property in Central Wisconsin look no further; Easton Shores has something for almost anyone at an affordable price. The parcels range from 4 to 8 acres of woods, water, meadows and seclusion. There are several waterfront parcels and deeded access properties. We encourage both Buyers and Agents to join the Landman Realty llc. Team for an afternoon of fun. **For the Grand Opening we will be having a brat fry, buyers incentives (limited time only), property tours, area information packets, games and maybe a little fishing.** *Directions: From Adams: Hwy 13 S, to Edgewood Dr. E, 10th Dr. S, Property On Left*

**Woods
Water &
Seclusion**



**Camp
Build or
Just Invest**



888-696-8695



www.TheLandman.net