

August 2014 Real Estate Newsletter - <http://www.thelandman.net/august-2014-newsletter.html> | PDF version



**Landman**  
Realty LLC

**888-696-8695**

**Vacant Land  
Residential Homes  
Land Contracts  
Log Homes & Cabins  
Waterfront & Access**

**OPEN**

**Personal Showings**  
Including Most Holidays

[www.TheLandman.net](http://www.TheLandman.net)

August 2014 **Landman Realty LLC** Real Estate Newsletter.

NEW: **Take the 1 minute Poll**. Help us help you! <http://www.thelandman.net/campsite-building-site-poll.html>

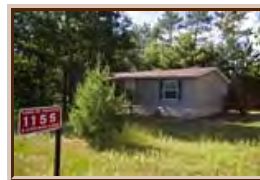


#### Lakefront CAMPING

Almost 3 Acres | Wooded | Land Contract | Lakefront | The Preserve at Lawrence Lake | Camping Allowed | Very affordable Lakefront

parcel on the crystal clear water of... **\$99,900.**

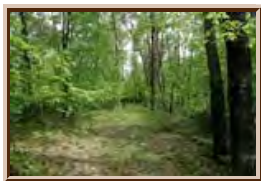
(Lot 16 also available with Well, Septic & Electric)



#### By Big Roche-A-Cri Lake

3 Bd, 2 Ba, 1400 sq ft newer Doublewide Mobile Home on 1/2 Acre Wooded Corner Lot. Deck | 3 bedroom | Affordable | Big Roche A

Cri Lake | Deeded lake access | Very well maintained. Stove, frig, window coverings and washer & dryer are **all included!** Spacious & bright kitchen has lots of cabinets. **\$74,900.**



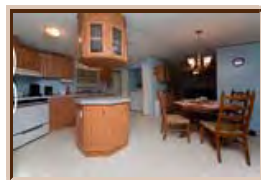
**Featured Wisconsin Real Estate Developments** and Subdivisions like [Berklungs Streamfront](#) (left) and [Petenwell Landing](#) (right). Here you will find maps, photos, documents, descriptions, real estate plus general description of not only the development but the area as well.



<http://www.thelandman.net/real-estate-developments-in-wisconsin.html>

#### THE LOCATION!

Turn-key country mobile home on almost 2 acres of mature Oaks & Pines. Most furnishings are included, so walk in and start enjoying this get-away place! Excellent location within walking distance of a restaurant/bar & also a campground with a pool,



#### Boat Slip on Lake PETENWELL

Lake Petenwell and Twin Lakes Shared Piers | Land Contract | Mostly Wooded | ATV Trails | Wildlife | Close to the water! Very affordable lake access parcel that is almost an acre and a half of ... **PRICED TO SELL** with



waterslide & more! Within minutes of several lakes **\$52,000.**

Possible Land Contract. **\$14,900.**



**Manufactured-Mobile.com** this website features Manufactured Mobile Houses for sale throughout the entire state of Wisconsin organized by Region and by individual Counties. These properties are then organized by price from High to Low and Low to High using Days on the Market for that specified area. JUST



LISTED Mobile Home in Park for **\$17,200** RIGHT BY CASTLE ROCK LAKE!!! Call **888-696-8695**



### Vacation Cabin

Turn-key Cottage | Close to Lake Petenwell | Lots of Wildlife | ATV Routes & Snowmobile Trails nearby | Loft | Cedar ceiling | Lots of extras

| Absolutely delightfully cute cabin that is nestled into...  
PRICED TO SELL at **\$49,950.**



### 40 Wooded Acres Private

**Well, Septic, Electric 2,400+ feet off the road!!!** This property is mostly wooded with lots of deer and turkey sign. Located just north of

Big Roche-A-Cri Lake. Very private acreage is high and dry making this a great hunting retreat, a homesite for full time living or a vacation spot. **\$94,900.**



## Red Fox & Turkey Vultures

BLAST FROM THE PAST for those who missed it last year - **Video of Fox Pups & Baby Turkey Vultures**

**Red Fox** - The *Wisconsin Vulpes Vulpes* better known as the Red Fox is one of our most beautiful animals. If you get the chance to see one nearby, take a...  
Checkout the new fox pups playing video from Spring 2013 -  
<http://www.wisconsin-wi.com/wisconsin-red-fox.html>

**Turkey Vultures** - Wisconsin is filled w/ many Vultures soaring through the sky looking for their next tasty meal. Many people have become frightened by this enormous bird; however, there is nothing to be afraid of... <http://www.wisconsin-wi.com/turkey-vultures.html>



### 1 ac w/ Well, Septic, Electric

**HOT PROPERTY ALERT!**  
Located minutes close to Lake Petenwell, Wisconsin River plus Castle Rock Lake now just pull your camper in , hookup and start



### POND FRONTAGE

Beautiful waterfront parcel is ready to build on! This 1.3 acre wooded wildlife paradise is located very close to Wolf Lake and numerous other small lakes. This mixed hardwood & pine forest that is



enjoying the wildlife drinking from the neighbors pond. PRICED TO SELL! **\$18,900.**

adorned with raspberry bushes & grapevines features 181' on a fishing pond that is fed by Peppermill Creek... **\$29,900.**

**Wisconsin Cabin for Sale Search - 2+ Acres under 100K Mobiles NOT selected from [IDXWI.com](http://IDXWI.com)**

					
58430 Matts Dr DRIVE GRAND VIEW, Wisconsin 54839 \$35,000	W12148 Jones Road ROAD ATHELSTANE, Wisconsin 54104 \$35,000	5173 N 28th St STREET MILWAUKEE, Wisconsin 53209 \$35,000	N17437 Marigold DRIVE BEECHER, Wisconsin 54156 \$35,500	N17435 Marigold DRIVE BEECHER, Wisconsin 54156 \$38,500	8729 N Bass Lake Rd ROAD UNION, Wisconsin 54830 \$39,500



**Commercial ACREAGE**

State Hwy Frontage | Zoned for Business | High Traffic Intersection | Buildable | 22+ Acres Price reduced for quick sale! Hurry! Fantastic opportunity to build your own business...  
**\$98,900.** 888-696-8695



**LAND CONTRACTS**

Several Land Contracts to choose from starting at **\$5,000.** Includes .75, 5, 10 upto 40 Acres parcels which allow camper close to Lakes, ATVing, Pubilc Land and more....

Checkout our [4th of July Brochure!](#) Also follow us on [Pinterest](#), [Twitter](#), [Facebook](#), [Google+](#) & [Dailymotion!](#)

Landman Realty llc deems information accurate but does not guarantee accuracy of information. All material information must be independently verified by buyer, agents & buyers agents.

Landman Realty llc - August 2014 Newsletter - 888-696-8695 | [www.TheLandman.net](http://www.TheLandman.net)

{unsubscribe}Unsubscribe{/unsubscribe}